

MEGA-spin™ Agarose Gel DNA Extraction Kit

For gel extraction or enzymatic reaction cleanup
CAT. 17181 (50 col.) 17183 (250 col.)

Format : Spin column with 2ml collection tubes
Application: Gel extraction or enzymatic reaction cleanup
Typical yield: 50-60% in 50bp – 200bp DNA
 80%-90% in 200bp-10Kb
Throughput: 1-24 samples
Prep. time: <15 minutes
Elution volume: 20-100µl



- DNA fragments extracted in 15 minutes
- Gel extraction from standard or low-melt gels in TAE or TBE buffer
- Do not use sodium iodide.
- No change of pH, then needn't add sodium acetate.
- High recovery and purity
- No interfere with subsequent reactions

M 1 2 3 4 5

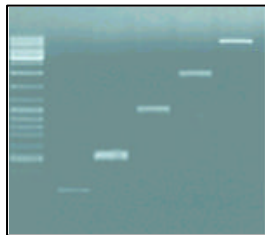
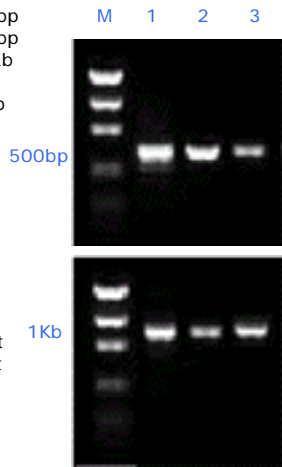


Fig. Recovery of Gel DNA
 Various sized of DNAs were recovered by MEGA-spin™ Kit. Recoveries of 60%-90% are obtained according to DNA size.
 Lane 1: 100bp
 Lane 2: 500bp
 Lane 3: 1.5Kb
 Lane 4: 5Kb
 Lane 5: 10Kb



THE COMPANY
 which you DESIRED

Fig. Comparison of recovery
 Agarose gel DNA extraction was carried out with 500bp or 1Kb DNAs using different kits according to supplier's specification.
 Lane 1: iNtRON's MEGA-spin™ Kit
 Lane 2: Supplier A
 Lane 3: Supplier B



PCRquick-spin™ PCR Product Purification Kit

For PCR products cleanup and nucleotide removal
CAT. 17202 (250 col.)

The PCRquick-spin™ Kit procedure uses silica-membrane technology to quickly and efficiently remove nucleotides, dNTPs, enzymes, primers, mineral oil, salts, ethidium bromide, dyes, detergents and other impurities from PCR reactions.

This PCRquick-spin™ products contain silica-gel membrane for binding of up to 15µg DNA in high-salt buffer and elution in low-salt buffer.

The system uses a simple bind-wash-elute procedure. PCR reaction samples are mixed with the appropriate binding buffer and then applied to the PCRquick-spin™ column where DNA binds to the silica-gel membrane. Impurities are washed away, and pure DNA is eluted in a small volume of the low-salt elution buffer provided or water, ready for use in any subsequent application.

- Purified double- or single-stranded DNA in 5 minutes from PCR amplification or other enzymatic reactions
- 90-95% recovery of PCR fragments
- >99.5% primer removal
- High recovery and purity
- No interfere with subsequent reactions

Before After Before After

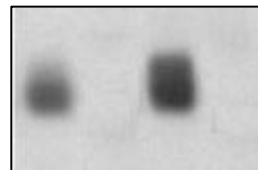


Fig. Removal of Primers
 Polyacrylamide gel analysis of eluted PCR products after using PCRquick-spin™ Kit. Blot analysis was performed with isotope-labeled primers.

Power cDNA Synthesis Kit

For first strand cDNA synthesis
CAT. 25011 (30 Rxn.) 25012 (60 Rxn.)

- Designed for synthesis of 1st strand cDNA
- All necessary reagents for cDNA synthesis
- Synthesize 1st strand cDNA within 60 min.
- Useful for total RNA or mRNA
- Supplied all reagents for synthesizing cDNA

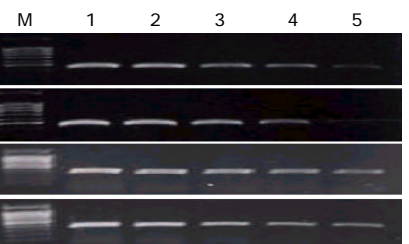


Fig. RT-PCR Amplification
 After total RNA extraction, the 1st strand cDNA was synthesized, and PCR reaction was performed by using diluted cDNA samples for GAPDH gene.
 Lane 1, undiluted cDNA; lane 2, 1/2; lane 3, 1/4; lane 4, 1/8; lane 5, 1/16 dilutions

Other Products

PRODUCTS	CAT. NO.	SIZE
i-PRE™ PCR Premix Kit → The PCR tube contains all components for PCR w/o primers.	25051 25052	48 rxn. 96 rxn.
i-Actin™ PCR Premix Kit → The PCR tube contains all components for PCR & Actin primers.	25061 25062	48 rxn. 96 rxn.
i-GAPDH™ PCR Premix Kit → The PCR tube contains all components for PCR & GAPDH primers.	25071 25072	48 rxn. 96 rxn.
i-Myco™ PCR Premix Kit → The PCR tube contains all components for detecting MYCOPLASMA.	25091 25092	48 rxn. 96 rxn.
LiSearch™ Rapid DNA Ligation Search Kit	15011	100 rxn.
LINKeed™ Rapid DNA Ligation Kit	15021 15022	30 rxn. 90 rxn.