

PRO-PREP™ Protein Extraction Kit

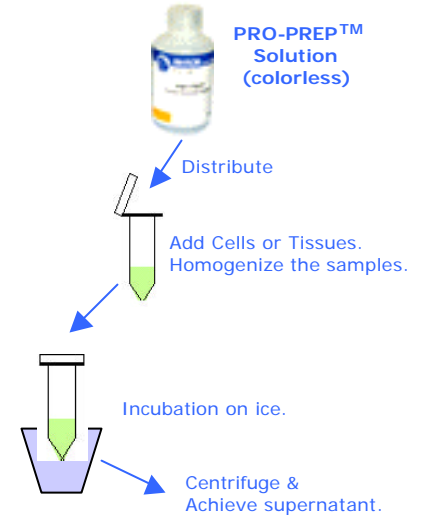
Do you use the Manual Method for Protein Extraction ?
Oh ! No !
Please Try iNtRON PRO-PREP™.

CAT. 17081 (100 ml)
CAT. 17082 (200 ml)

Convenient & Practical

The iNtRON PRO-PREP™ Protein Extraction Kit is the first commercially available kit designed for efficient extraction of soluble proteins from cells or tissues. The PRO-PREP™ has been specifically formulated for utilization in Western blotting, immunoprecipitation, and kinase/phosphatase assays. And more, the kit contains 5 kinds of protease inhibitors, so it is possible to extract intact proteins without degradation by protease.

- Protein extraction from cells or tissues
- Contains 5 kinds of protease inhibitors (PMSF, EDTA, Pepstatin A, Leupeptin, Aprotinin)
- Store at -20°C. The PRO-PREP™ solution doesn't freeze at -20°C.
- Very simple and convenient steps
- Save time (<30 min)
- Western blotting, Immuno-precipitation (IP), etc.



Species/Material	Amount	Yield
K562 (human)	5 x 10 ⁶	2.04 mg
SNU601 (human)	5 x 10 ⁶	1.89 mg
YAC1 (mouse)	5 x 10 ⁶	2.10 mg
B16 (mouse)	5 x 10 ⁶	1.90 mg
Spleen (mouse)	10 mg	9.01 mg
Kidney (mouse)	50 mg	9.91 mg
Lung (mouse)	10 mg	9.67 mg
Liver (mouse)	10 mg	6.59 mg

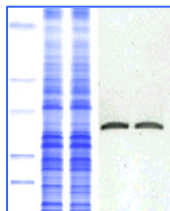
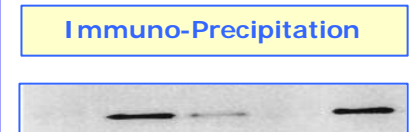
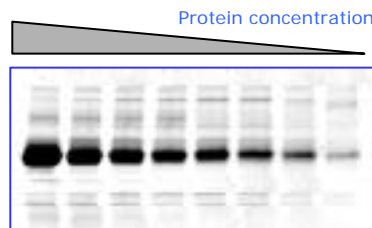


Fig. SDS-PAGE & Western Blot
Total protein was isolated from SNU601 and K562 cells using this kit. The isolated protein was electrophoretically analyzed on a 4-12% PAGE gel, and stained with Coomassie brilliant dye. Western blot analysis was performed for the expression of CDK2 protein in cancer cell lines.

Fig. Western Blot
Protein was isolated from CT26 cells using PRO-PREP™ kit. 1/10 of each eluate was used for SDS-PAGE. Then, the protein was transferred onto nitro cellulose membrane. And Western blot was performed with tubulin antibody.

Fig. IP & Western Blot
Representative Western blot of lysates from neurons immuno-precipitated with an RNAP antibody and blotted with an MBP antibody.

OPTIMAL SATISFACTION

WEST-ZOL™ (plus) WESTERN BLOT Detection System

CAT. 16021 (200ml) 16022 (400ml)

from EXTRACTION to MEASUREMENT
PROTEIN ONE-STEP SUPPLIER

PRO-MEASURE™ Protein Measurement Kit

CAT. 21011 (100ml) 21012 (200ml)

WEST-ZOL™ Western Blotting System uses horseradish peroxidase (HRP) conjugated anti-mouse and anti-rabbit antibodies for luminol-based detection of Western blots. Blots probed with mouse or rabbit primary antibodies are incubated with HRP-conjugated secondary antibodies. Addition of WEST-ZOL™ detection reagents results in a chemiluminescent signal that can be captured on film.

- Optimized system provides rapid, sensitive results using simple protocols.
- A rapid, sensitive, non-isotopic and quantifiable method for detecting protein immobilized on membranes.
- Suitable for use in Western blotting, protein slot blotting, immunoprecipitation and protein expression screening where HRP-based detection is used.
- Based on chemiluminescence resulting from the HRP-catalyzed breakdown of luminol.



Protein quantification is one of the important steps in protein research such as Western blot assay. Generally, Lowry assay or BCA assay are used. These methods are highly sensitive for protein quantification, but quite inconvenient and time-consuming. Contrarily, Bradford method is the most commonly used. iNtRON PRO-MEASURE™ solution is suitable for protein extracted from PRO-PREP™ Kit, even more convenient than Bradford assay, and very sensitive for protein quantification.

- High sensitivity and specificity (10-25ng/ml)
- Save time (<10 min)
- Lower background interference
- Suitable for PRO-PREP™ and WEST-ZOL™
- Standard solution (BSA solution) supplied.